

UR-W245C

UNIC MINI-CRAWLER CRANE

UR-W245C is compact enough, yet provides the maximum 2430kg of lifting power.

It is capable of lifting heavy loads of 2430kg with its class-leading minimum dimension and weight. The light weight yet allows it to move floor to floor in a standard freight elevator. Its compactness together with heavy lifting capacity provides excellent lifting solutions especially in restricted or confined area.

**Max
5.85m**
Working radius

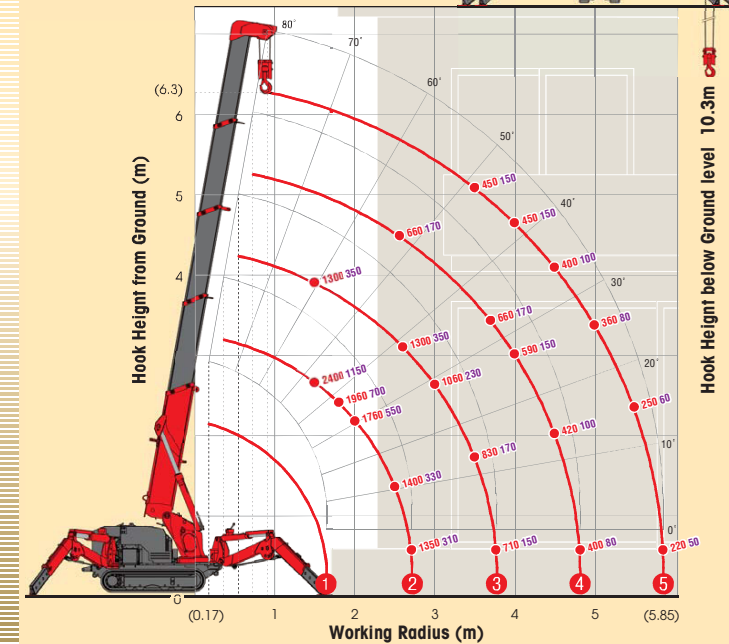
**Max
2.43t
×1.5m**
Lifting capacity

**Max
6.3m**
Hook height (Approx.)
(Above ground level)

1500kg
Mass of crane

WORKING RANGE & NET RATED LOADS (kg)

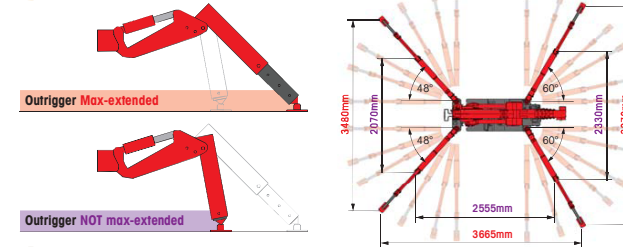
Outrigger ● Max-extended NOT max-extended



SPECIFICATIONS

Crane model	UR-W245C
Lifting capacity	Max. 2.43t at 1.5m
Working radius	Min. 0.17m, Max. 5.85m
Hook height (Approx.)	Above ground level: Max. 6.3m Below ground level: Max. 10.3m with 4-part line
Length	Min. 1.98m to Max. 6.19m
Extending speed	4.21m / 14.0 sec.
Raising angle / speed	0° to 80° / 10.0 sec.
Structure	5-section box beam type telescoping boom
Single line speed	52.0m / min (at 4th layer)
Hook speed	13.0m / min at 4th layer with 4-part line
Winch	Hydraulic motor driven, spur gear reduction, with automatic mechanical brake
Structure	Construction : IWRC 6 x WS(26) GRADE B / Diameter x Length : 8mm x 47.6m / Breaking strength : 42.4kN (4320 kgf)
Wire rope	2.40t capacity, 2 sheaves with safety latch
Hook block	360° continuous rotation on a ball bearing race
Slewing	Range: 360° continuous rotation on a ball bearing race Speed: 2.0 rpm
Structure	Trochoid motor, worm gear reduction, spur gear reduction, and worm self-locking brake (supported by ball bearings)
Outriggers	2-section (with damper) for bend and 3-section extension. Double acting hydraulic cylinders with pilot-operated check valves, direct pushing type (Directly connected with hydraulic automatic lock device)
Hydraulic pump	Type: Variable delivery piston pump Rated pressure: 21.6 MPa (220 kgf/cm ²) Rated delivery: 36 l/min Rated revolution: 1800 rpm
Hydraulic oil tank capacity	23 liters
Safety devices	Pressure relief valve for hydraulic circuit / Counterbalance valves for boom raising and boom telescoping cylinders / Hook safety latch Automatic mechanical brake for winch / Automatic stop for overwinding / Overwinding alarm / Emergency stop button Inter-lock device of crane and crawling levers / Automatic stop for leaving minimum wire rope / Level

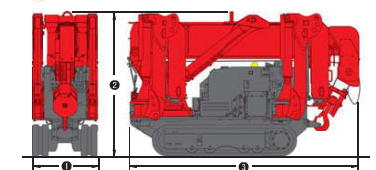
OUTRIGGER POSITIONS



CRAWLING GEAR

Crane model	UR-W245C
Crawling speed	Low speed : 0-2.1 km/h, High speed : 0-3.8km/h, forward / backward
Hill climbing ability	20°
Tread length	1050mm
Ground contact pressure	46.7 kPa (0.48 kgf/cm ²)
Engine manufacturer / model	Mitsubishi / GM401LE
Displacement	391cc
Maximum output	6.6kW(9.0PS) / 1800 rpm, Rated output
Fuel	Petrol
Fuel tank capacity	6 liters
Steering	Hydraulic drive independent of left / right
Starter	Starter motor

DIMENSIONS



Crane model	UR-W245C
① Total width	600mm
② Total height	1340mm
③ Total Length	2150mm
Mass of crane	1500kg